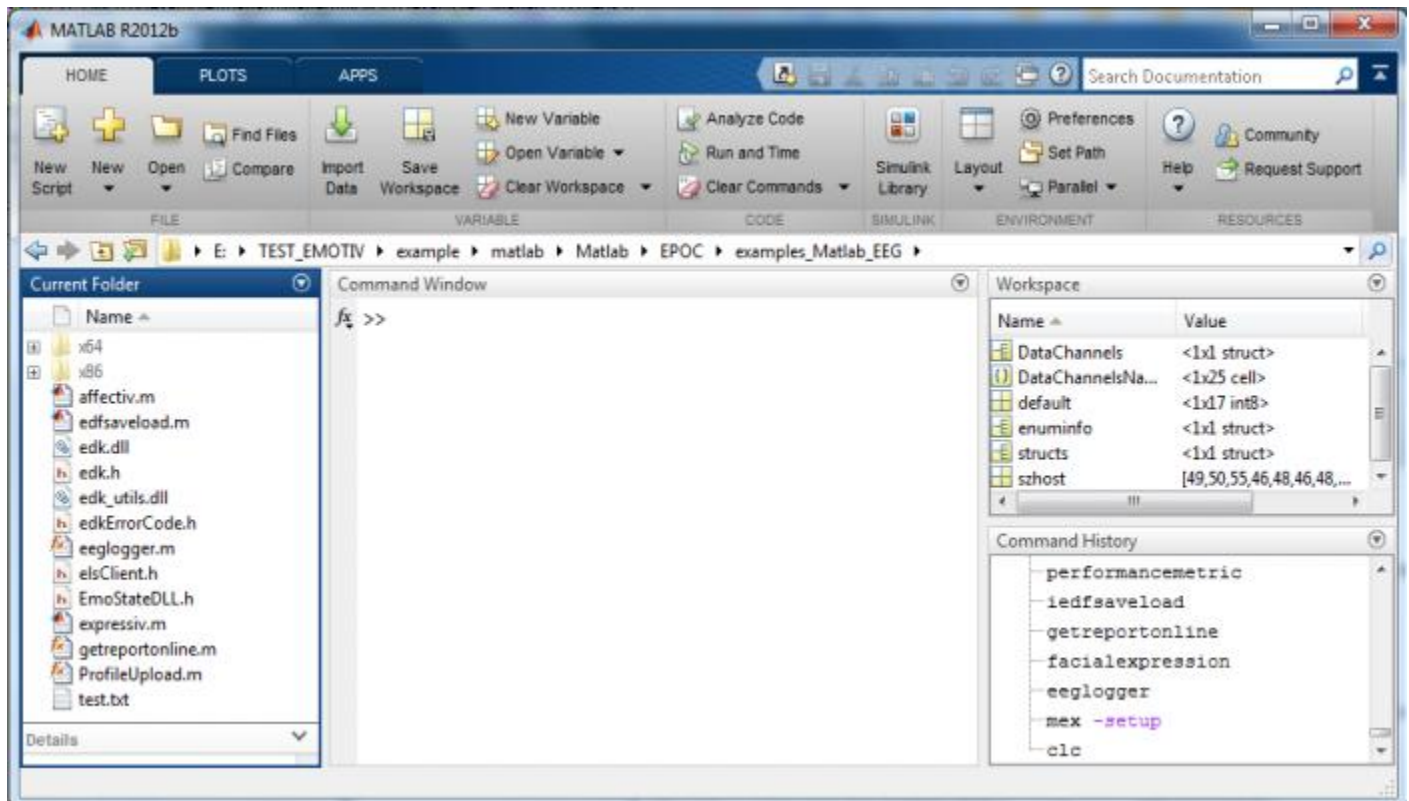


1. Test Examples

Open matlab, select Home / Open. You go to folder store example matlab



- Step 1: mex -setup

Matlab show:

```
>> mex -setup

Welcome to mex -setup. This utility will help you set up
a default compiler. For a list of supported compilers, see
http://www.mathworks.com/support/compilers/R2012b/win32.html

Please choose your compiler for building MEX-files:

fx Would you like mex to locate installed compilers [y]/n? |
```

- Step 2: Choice: y

Matlab Show:

```
Select a compiler:  
[1] Lcc-win32 C 2.4.1 in C:\PROGRA~2\MATLAB\R2012b\sys\lcc  
[2] Microsoft Visual C++ 2010 in C:\Program Files (x86)\Microsoft Visual Studio 10.0  
  
[0] None  
  
fx Compiler:
```

- Step 3: Choice 2

```
Compiler: 2  
  
Please verify your choices:  
  
Compiler: Microsoft Visual C++ 2010  
Location: C:\Program Files (x86)\Microsoft Visual Studio 10.0  
  
fx Are these correct [y]/n?
```

- Step 4: Choice y

Matlab Show:

```
Are these correct [y]/n? y

*****
Warning: MEX-files generated using Microsoft Visual C++ 2010 require
that Microsoft Visual Studio 2010 run-time libraries be
available on the computer they are run on.
If you plan to redistribute your MEX-files to other MATLAB
users, be sure that they have the run-time libraries.
*****

Trying to update options file: C:\Users\thuy\AppData\Roaming\MathWorks\MATLAB\R2012b\mexopts.bat
From template:                C:\PROGRA~2\MATLAB\R2012b\bin\win32\mexopts\msvc100opts.bat

Done . . .

*****
Warning: The MATLAB C and Fortran API has changed to support MATLAB
variables with more than 2^32-1 elements. In the near future
you will be required to update your code to utilize the new
API. You can find more information about this at:
http://www.mathworks.com/help/techdoc/matlab\_external/bsflnue-1.html
Building with the -largeArrayDims option enables the new API.
*****

fx >> |
```

- After building, you select a file.m, click F9 to run

2. Note

❖ If you run example and get a error same as:

```
>> getreportonline
EDK library already loaded
Error using calllib
Parameter can not be converted to a string
```

Error in getreportonline (line 34)

```
    ALLOK = calllib('edk','EE_EngineConnect', default); % success means this value
is 0
```

You click to *line 34* and change *default* by '*Emotiv Systems-5*', you save code and click F9 again to run.

❖ You need run ProfileUpload example first.